

## THE BONE MARKER ELISA PRODUCTS

Setting the standard for clinical research. **BIOMEDICA**

### MARKERS OF BONE TURNOVER – REGULATION MOLECULES

**sRANKI**, soluble receptor activator of nuclear factor (NF)- $\kappa$ B ligand, is the main stimulatory factor for the formation of mature osteoclasts and is essential for their survival. RANKL activates its specific receptor RANK that is located on osteoclasts and dendritic cells.

#### FREE SOLUBLE RANKL HIGH SENSITIVITY ELISA NEW (BI-20462) - CE marked

Method	Sandwich ELISA, HRP/TMB
Sample type	serum, Heparin plasma
Sample size	150 $\mu$ l / test, 12x8 tests
Standard range	0 – 2 pmol/l
Detection limit	0.01 pmol/l
Incubation time	2h / overnight / 1h / 30min



**Osteoprotegerin (OPG)** acts as a soluble secreted receptor for RANKL and inhibits osteoclast development. OPG is the counterpart of sRANKL.

#### OSTEOPROTEGERIN ELISA (DAY TEST) (BI-20403) - CE marked

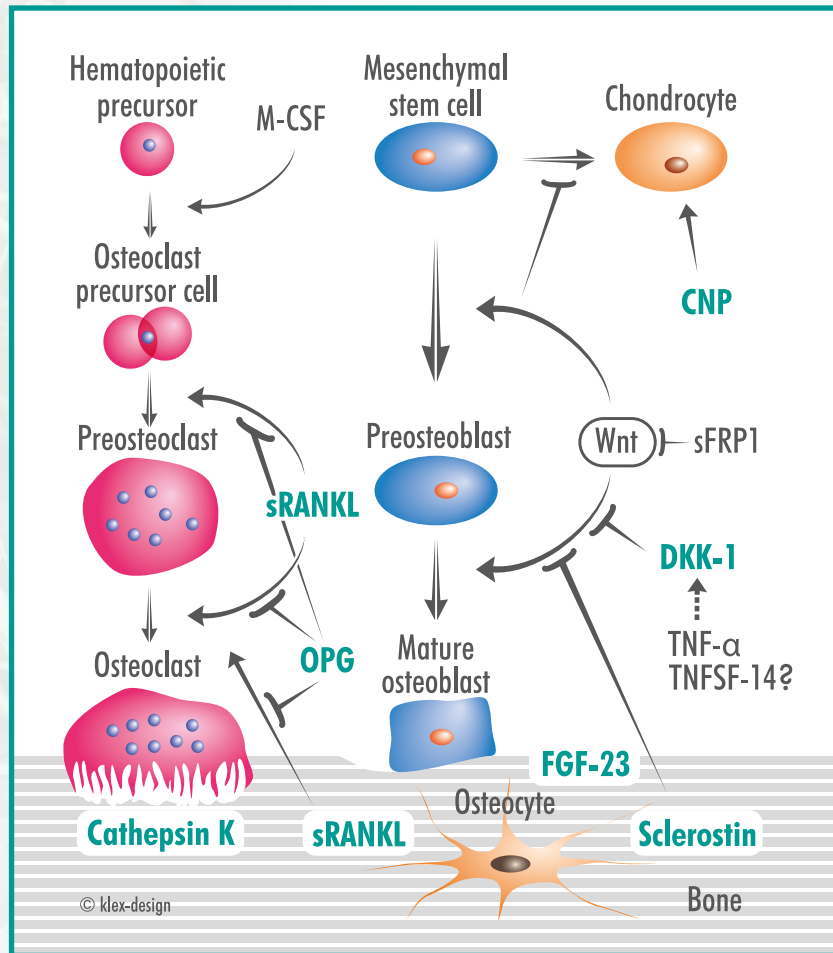
Method	Sandwich ELISA, HRP/TMB
Sample type	plasma, serum
Sample size	20 $\mu$ l / test, 12x8 tests
Standard range	0 – 20 pmol/l
Detection limit	0.07 pmol/l
Incubation time	3h / 1h / 30min



**Sclerostin** serum levels are significantly elevated in postmenopausal women, in patients with immobilization-induced bone loss, and in patients with multiple myeloma. Circulating sclerostin serum levels are reduced by intermittent PTH therapy and estrogen. The development of neutralizing antibodies to DKK-1 and sclerostin are found to be promising therapeutic agents in diseases with elevated bone resorption.

#### SCLEROSTIN ELISA | HIGH SENSITIVITY (BI-20492) - RUO

Method	Sandwich ELISA, HRP/TMB
Sample type	plasma, serum
Sample size	20 $\mu$ l / test, 12x8 tests
Standard range	0 – 240 pmol/l
Detection limit	2.6 pmol/l
Incubation time	overnight / 1h / 30min



**Dickkopf-1 (DKK-1)** and sclerostin are potent inhibitors of Wnt signalling and play an important role in osteoblast maturation. Increased circulating DKK-1 levels have been reported in clinical situations characterized by markedly depressed bone formation as in multiple myeloma, or by increased focal osteolysis from multiple myeloma, and bone metastases from breast, prostate or lung cancer, and in rheumatoid arthritis.

#### DICKKOPF-1 ELISA (DAY TEST, no sample predilution!) NEW (BI-20413) - RUO

Method	Sandwich ELISA, HRP/TMB
Sample type	serum, cell culture supernatants
Sample size	20 $\mu$ l / test, 12x8 tests
Standard range	0 – 160 pmol/l
Detection limit	1.7 pmol/l
Incubation time	2h / 1h / 30min